

Adirondacks Field Trip Community Ecology Fall 2004

Dr. Gregg Hartvigsen

PARTICIPANTS:

Andrasik, Ann M	ama11@geneseo.edu
Chynoweth, Mark W	mwc4@geneseo.edu
Crosier, Brooke	bmc4@geneseo.edu
Fazio, Reed J	rjf3@geneseo.edu
Hurlbut, Diana L	dlh6@geneseo.edu
Lane, Steven M	sml11@geneseo.edu
Nimmo, Kayla R	krn2@geneseo.edu
Peppenella, Sharon M	smp5@geneseo.edu
Vaughn, Diana L	dlv4@geneseo.edu
Waymouth, Heather E	hew2@geneseo.edu
Yerton, Kelly L	kly3@geneseo.edu
Lewis, Rebecca	rjl3@geneseo.edu

Accommodations:

Fish Creek Pond Campground
Saranac Lake, NY 12983
(518) 891-4560

Itinerary

Thursday, 9-16-04

1:00 PM Leave Geneseo and arrive at Fish Creek Pond Campground. We will be leaving in two separate vans at 2:00 PM.

Friday, 9-17-04

8:30 AM Leave for Algonquin. We will spend the day hiking this mountain. During the ascent we will take breaks and observe changes in temperature, tree species composition, sizes of trees, soil temperature, and growth rate of saplings.

5:00 PM Return to campsite.

Saturday, 9-18-04

8:30 AM Leave for Indian Carry near Middle Saranac Lake. .

9:00 AM Arrive ~1 mile east of Indian Carry just south of Middle Saranac Lake. At this site we will be investigating the characteristics of pits and mounds and windthrows on a hillside. We'll also have a chance to see a swamp community and maybe catch sight of a beaver.

12:00 PM Lunch in the forest

2:00 PM Explore communities at Fish Creek (canoe?)

5:30 PM Dinner at campsite.

Sunday, 9-19-04

7:30 AM Pack up, hike Ampersand Mtn.

12:00 PM Lunch (leftovers and/or fast food) and head home

Meals Sign-Up (pair up):

Thursday

dinner

Friday

breakfast

lunch

dinner

Saturday

Breakfast

Lunch

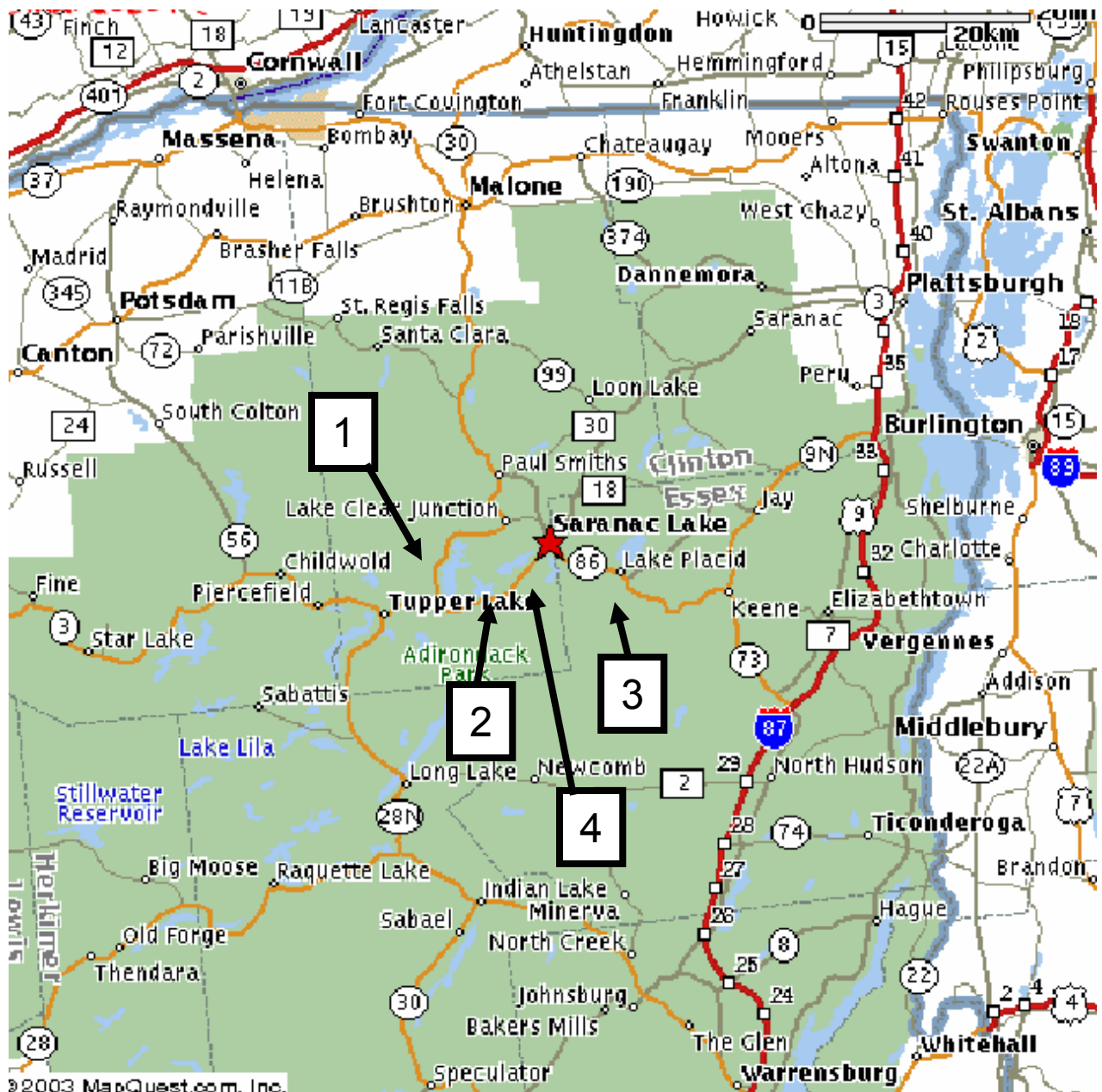
Dinner

Sunday

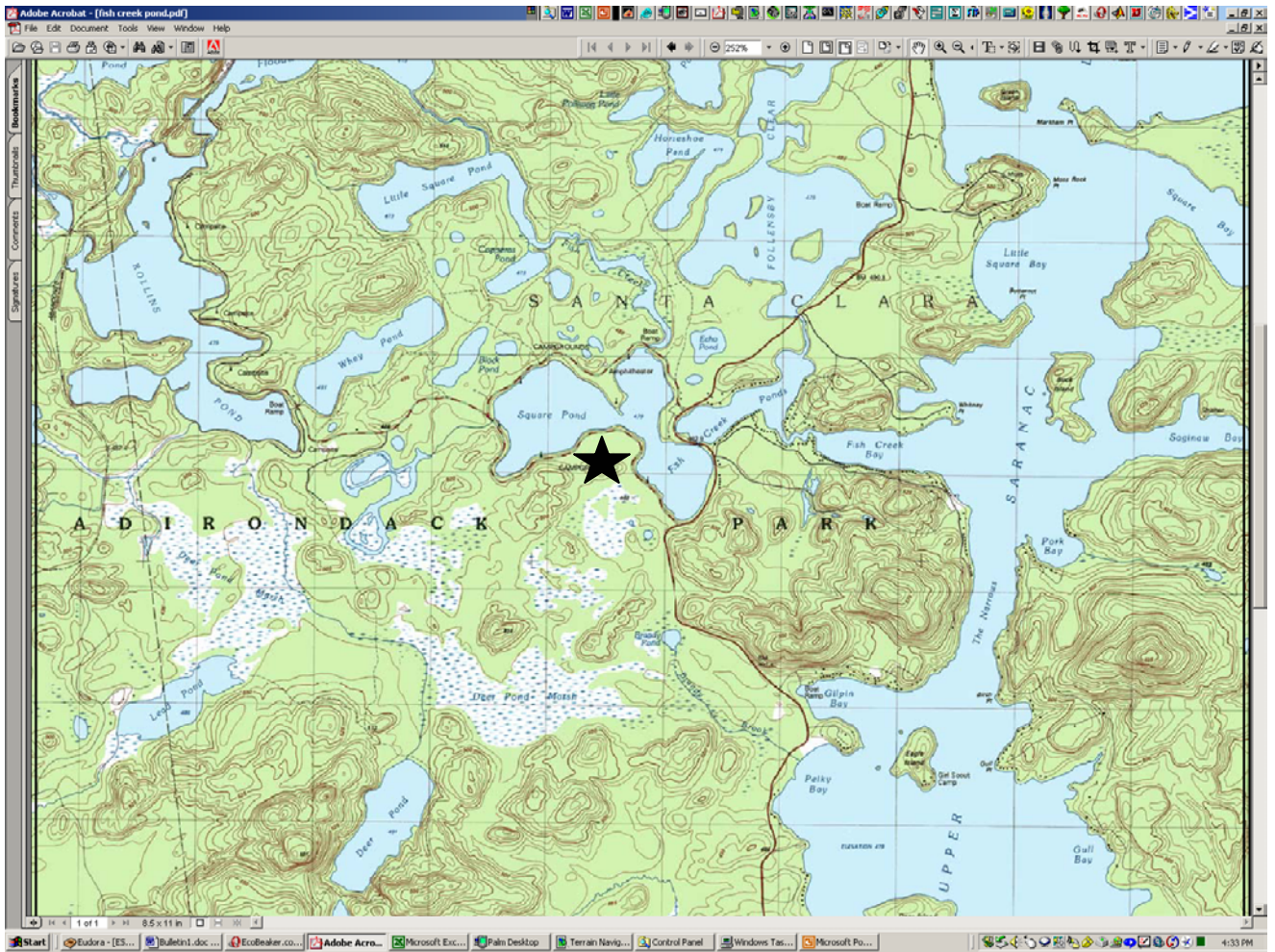
Breakfast

Overview map of sites we'll visit

1. Fish Creek Pond basecamp
2. Middle Saranac Lake – windthrow area
3. Algonquin Peak
4. Ampersand Mtn

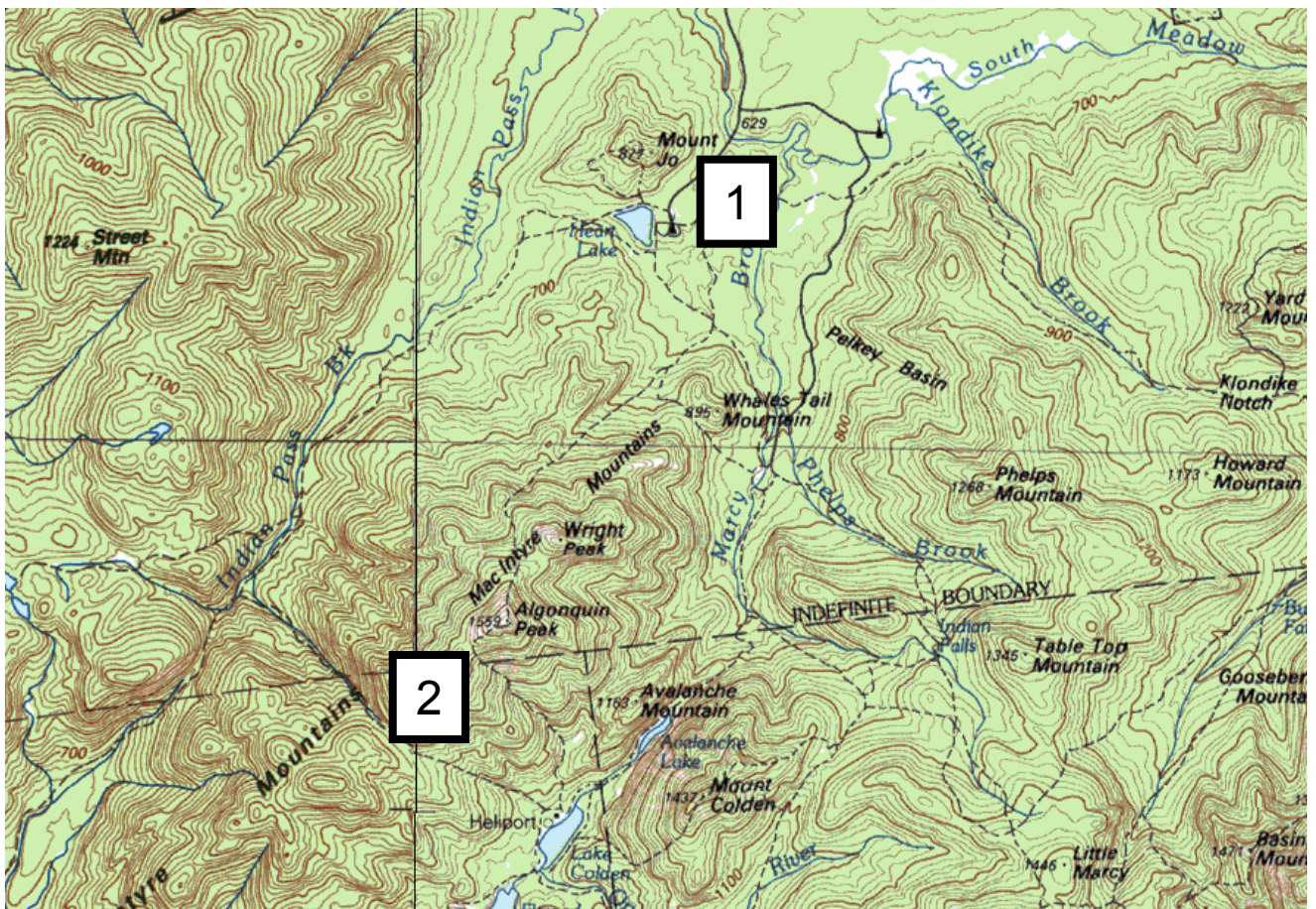


Campsite: Fish Creek Pond

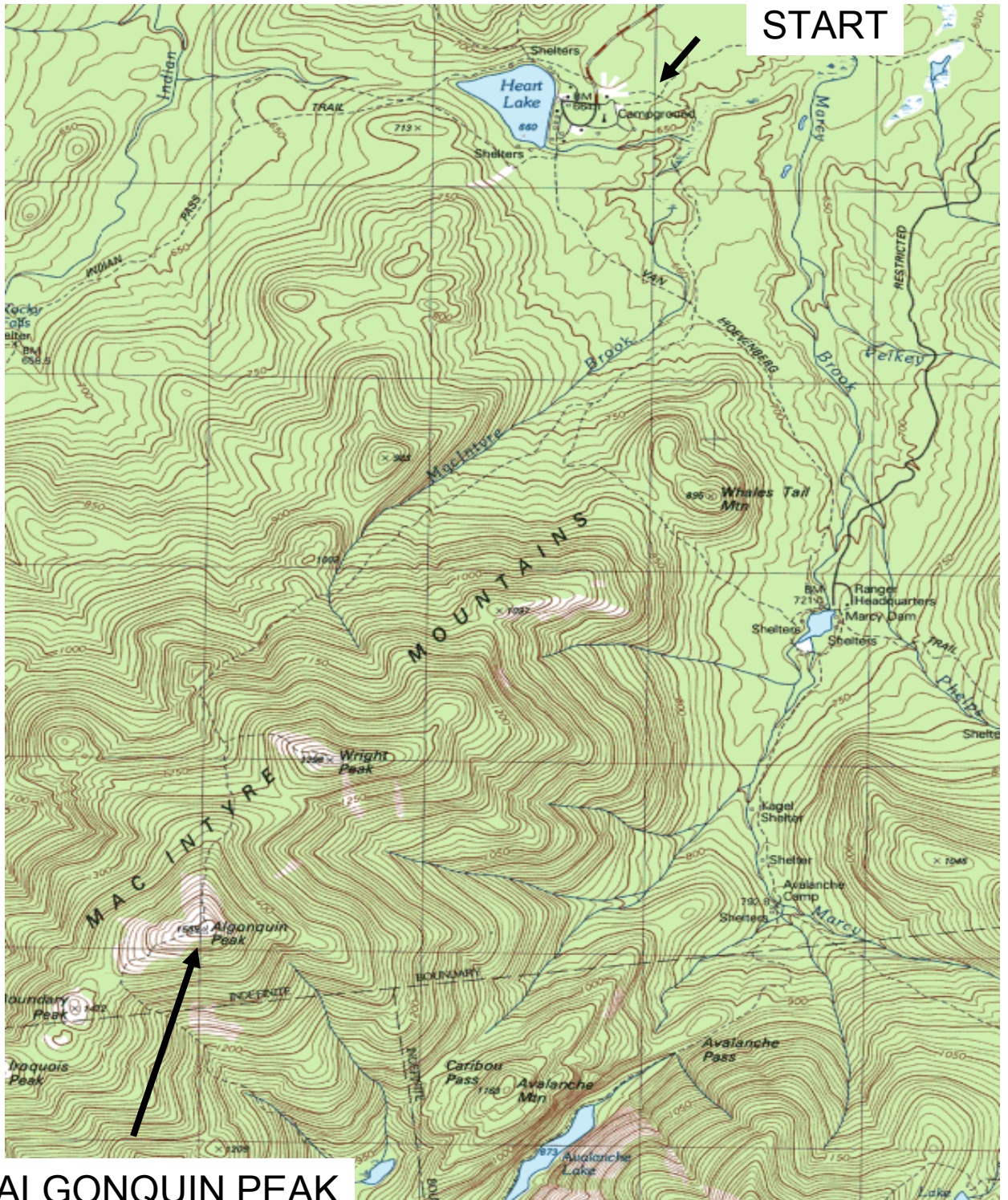


Friday: Algonquin Peak.

Begin at Heart Lake (1) at the Adirondack Lodge and hike to top of Algonquin (2) and back. Along the way we'll have a chance to view the changing forest community and assess the effect of elevation on growth rates. Near the trail to Wright Peak we will observe balsam fir waves of regeneration.



Friday: Algonquin up close



ALGONQUIN PEAK

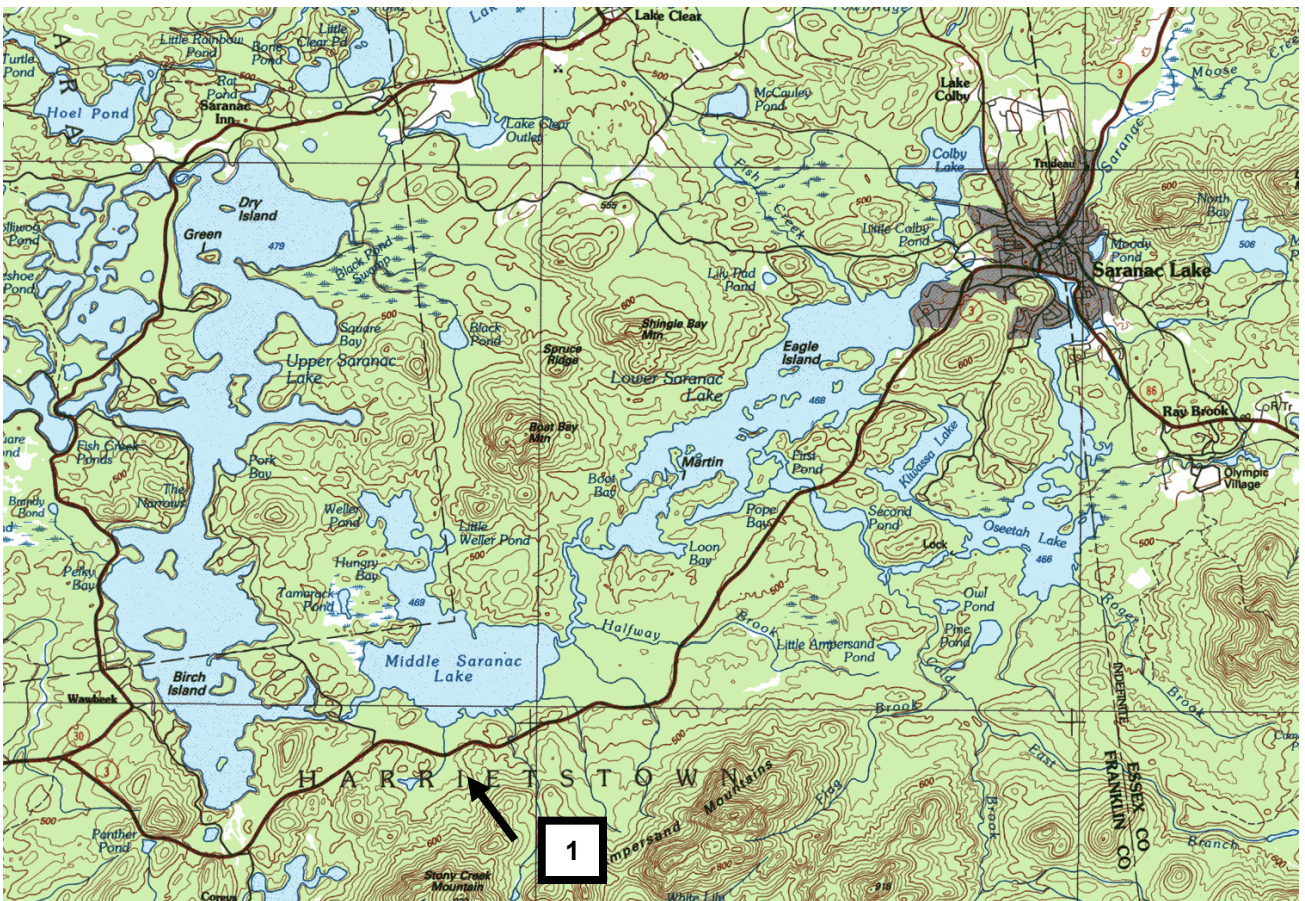
Saturday morning: Forest disturbance site

This site will give us a chance to look at a disturbed forest.

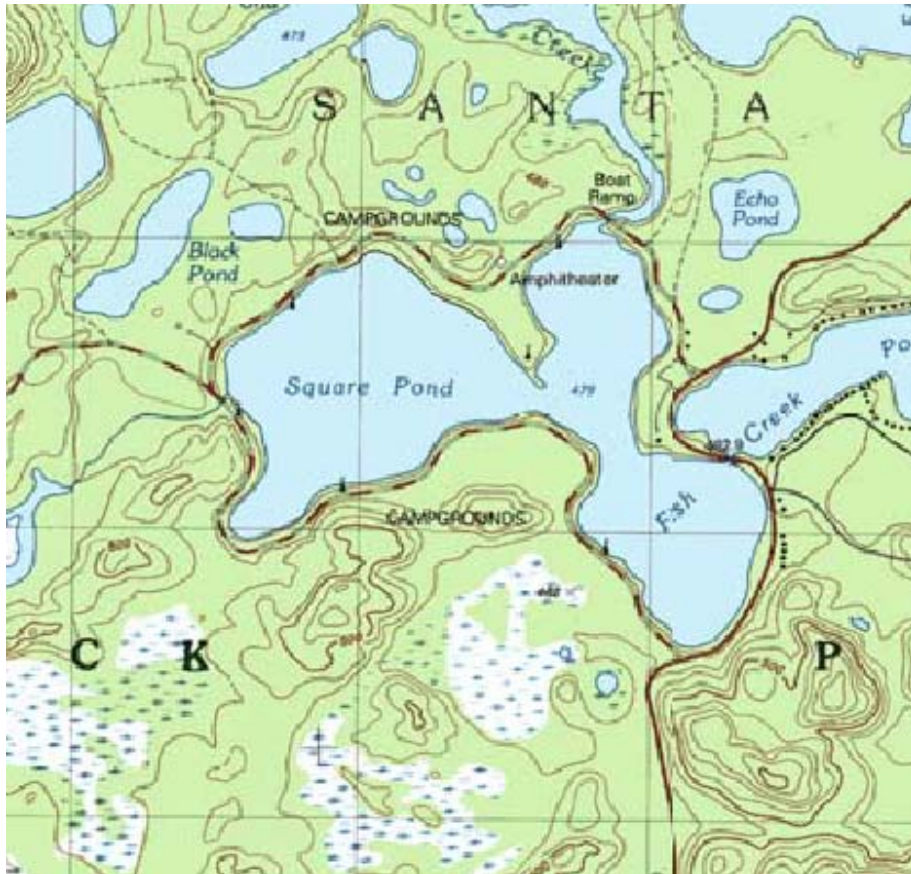
What signs do you see?

Can we quantify these patterns?

Morning ends with lunch in Saranac Lake.



Saturday afternoon: Explore Fish Creek Pond



Sunday morning: Explore Ampersand Mtn